

## Help map the distribution of honey bee pests and diseases!

### 1 Inspect honey bee colonies, both adult bees and brood



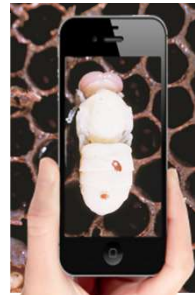
### 2 Photograph the hive environment



Photograph any  
unhealthy brood



Photograph any  
deformed bees



Photograph any  
mites on bees



Photograph any  
beetles in hive

#### Report cases of...



American foulbrood  
(AFB, *Paenibacillus  
larvae*); endemic

Small hive beetle  
(*Aethina tumida*);  
exotic to SW WA



Varroa (*V. destructor*  
and *V. jacobsoni*);  
exotic to Australia



### 3 Report observations using MyPestGuide™ Reporter

Honey bee experts will automatically be notified when you have made a report.

Experts will identify the pest, disease or bee health condition in your photographs and reply back to you with advice.

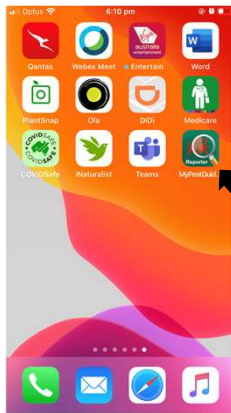
Reporting notifiable bee diseases, i.e. AFB, helps us improve biosecurity strategies and protects the honey bee industry.

[mypestguide.agric.wa.gov.au](http://mypestguide.agric.wa.gov.au)

Follow the instructions below when surveying bee hives

**1** Download **MyPestGuide™ Reporter** from the app store

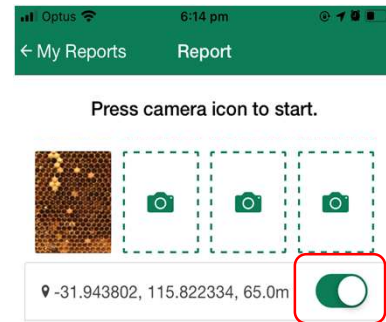
**2** Open the app on your device



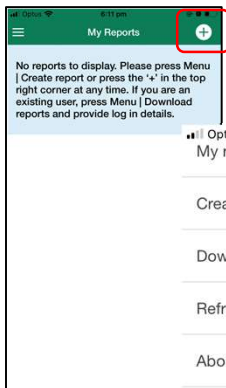
Select the **MPG™ Reporter** icon and wait for the splash screen to appear.

Close the Quick start screen or select 'Don't show again'.

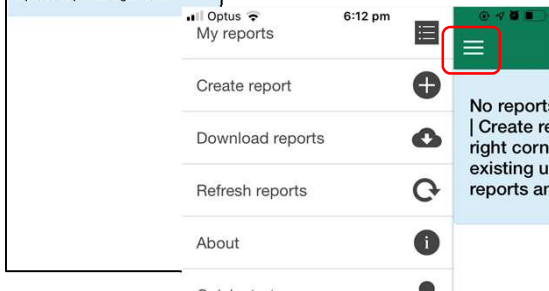
**5** Check location is turned ON



**3** Create a report

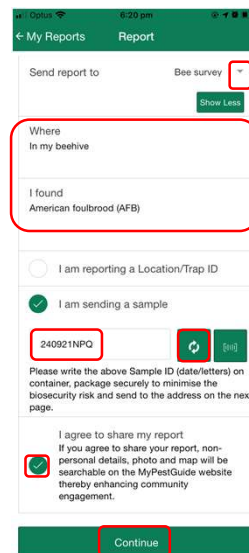


Select the '+' symbol or use the menu to start



No reports | Create report  
right corner  
existing user  
reports an

**6** Enter observation details



Select 'Bee survey'

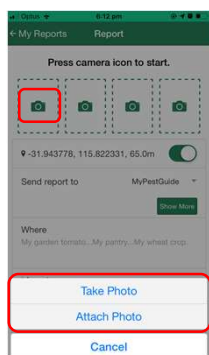
Enter the details of your observation

If collecting a sample tick 'I am sending a sample'. Select 'refresh' symbol to generate a **sample ID** and write this on your container.

Click 'I agree to share my report'

Click 'Continue'

**4** Attach your photos

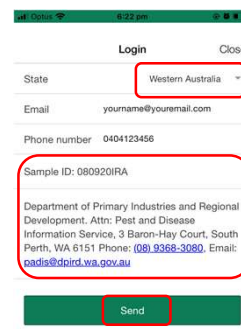


Press the camera icon to start

Or use your device to snap a photo then share it to the app

Take or attach up to 4 photos

**7** Confirm your contact details



Select your **State**

Enter your **Email** and **Phone number**

Write the **Sample ID** on the container if sending a sample.

Click 'Send'!

For more information:

Email: [mypestguide@dpird.wa.gov.au](mailto:mypestguide@dpird.wa.gov.au)